

**PRESQUE ISLE COUNTY RECYCLING**

Presque Isle Conservation District  
658 S Bradley Hwy | Rogers City, MI 49779

989-734-4000  
PresqueIsleRecycling.org



PresqueIsleRecycling.org | 989-734-4000

Local  
Postal Customer

PRSR STD  
ECRWSS  
U.S. POSTAGE  
PAID  
EDDM RETAIL

# BIN LOCATIONS Where to Recycle

ALL SITES AVAILABLE TO ANY PRESQUE ISLE COUNTY RESIDENT

These bin locations are open 24/7, except as noted.

- 1 Allis Township Hall**  
20018 W 638 Hwy , Onaway  
In the parking lot
- 2 Hawks**  
8097 Co Rd 451  
In parking lot next to the Post Office
- 3 Krakow Transfer Station**  
13936 US 23 S, Presque Isle  
Year-round  
Wed 1-4 pm  
Sat 10am-4 pm  
Plus Memorial Day thru Labor Day Weekends  
Sun 10am-2pm
- 4 Millersburg**  
5280 Walker Hwy  
West end of the Fire Hall parking lot
- 5 North Allis Township Hall**  
1940 M-211, Onaway  
In the parking lot
- 6 Ocqueoc Transfer Station**  
6900 N Ocqueoc Rd  
0.6 miles south of US 23 N  
May thru Sept  
Mon, Wed, Sat 9am-5pm  
Oct thru April  
Wed & Sat 9am-5pm
- 7 Posen Village Hall**  
1703 E State St (E 634 Hwy)  
In the parking lot
- 8 Presque Isle Township Hall**  
12653 E Grand Lake Hwy  
In the parking lot
- 9 Rogers City Transfer Station**  
503 Park Dr, Rogers City



# PRESQUE ISLE COUNTY Recycling Guide

THANK YOU FOR SUPPORTING THE MILLAGE!

**EMPTY & RECYCLE**

Plastic bottles and containers

Cardboard

Papers

Cartons and cups

Cans and foil

**BAGGED** Bread and grocery bags

**BAG YOUR BAGS**

**Containers**

- Plastic bottles, jugs and jars
- Plastic tubs, trays and cups (no straws)
- Juice boxes, milk cartons and paper cups
- Metal cans, foil and trays
- Glass bottles and jars (no breakables)

EmmetRecycling.org

**Paper, Boxes and Bags**

- Newspapers and inserts
- Magazines, catalogs and books
- Office and writing paper
- Cardboard, cereal boxes and grocery bags (no plastic)
- Plastic grocery & bread bags (clean, dry, heaped)

EmmetRecycling.org

**NO Non-container plastic, metal or glass**

**NO Styrofoam**

**NO Sharps**



# Sort your recycling into two groups:

## CONTAINERS go into one bin

EMPTY & RECYCLE

### Juice boxes, milk cartons and paper cups

- NO juice pouches or straws

### Plastic bottles, jugs and jars, tubs, trays and cups

- Any 2.5 gallons or less
- Yes, plastic caps and lids, on their container, are now recyclable.
- NO Styrofoam
- **PUT BAGGED PLASTIC BAGS IN THE PAPER BIN**

### Metal cans, foil and trays, aluminum, steel and tin

- Metal lids, too
- NO aerosol cans or propane tanks

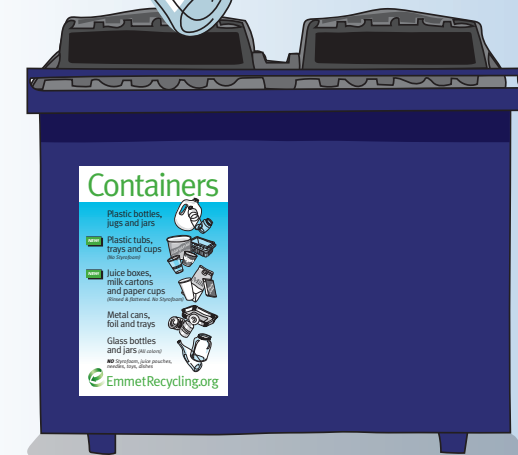
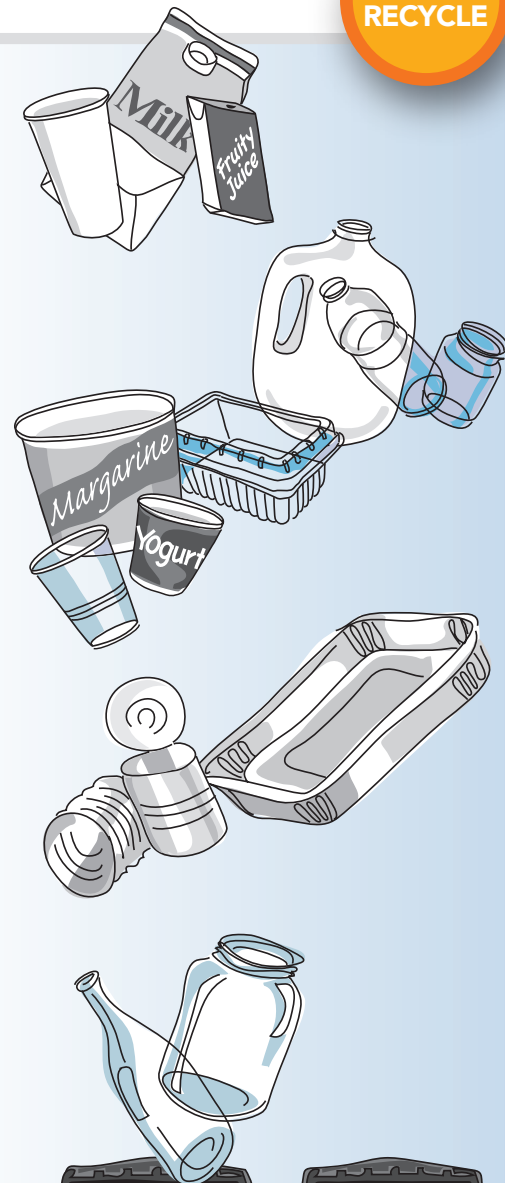
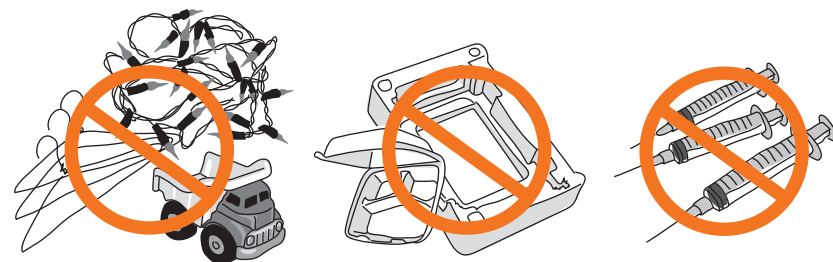
### Glass bottles and jars

- All colors and clear
- NO light bulbs, window glass, or glass dishes

NO Non-container plastic, metal or glass

NO Styrofoam

NO Sharps



## PAPER, BOXES AND BAGS go into another bin

### Cardboard and paper bags

- Also okay to include: boxes from frozen and refrigerated foods; boxboard — like cereal boxes and paper towel cores
- Please flatten boxes
- NO Styrofoam

### Newspapers, magazines, catalogs and books

- All okay: hardcover, paperback and phone books

### Office paper

- Also okay to include: envelopes and file folders and shredded paper. Please contain shredded paper in a plastic grocery bag.

### Plastic grocery and bread bags

- **STRETCHY, CLEAN AND DRY ONLY!**

- **BAG YOUR BAGS — stuff all your plastic bags into one bag and tie it shut.**

- Also okay to include: case wrap (as used on multipacks of water bottles, paper towel rolls), bubble wrap, plastic envelopes
- NO "crunchy" plastic film, i.e. chip/pretzel bags, cellophane



BAG YOUR BAGS



Still not sure if it's recyclable?

Visit us at [www.PresqueIsleRecycling.org](http://www.PresqueIsleRecycling.org) or call 989-734-4000